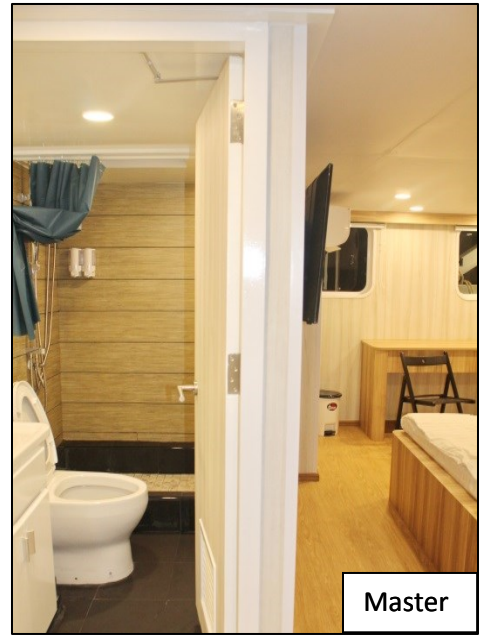
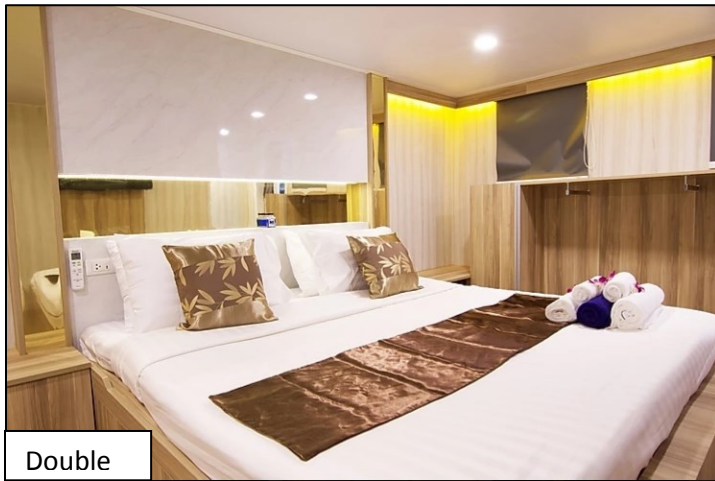


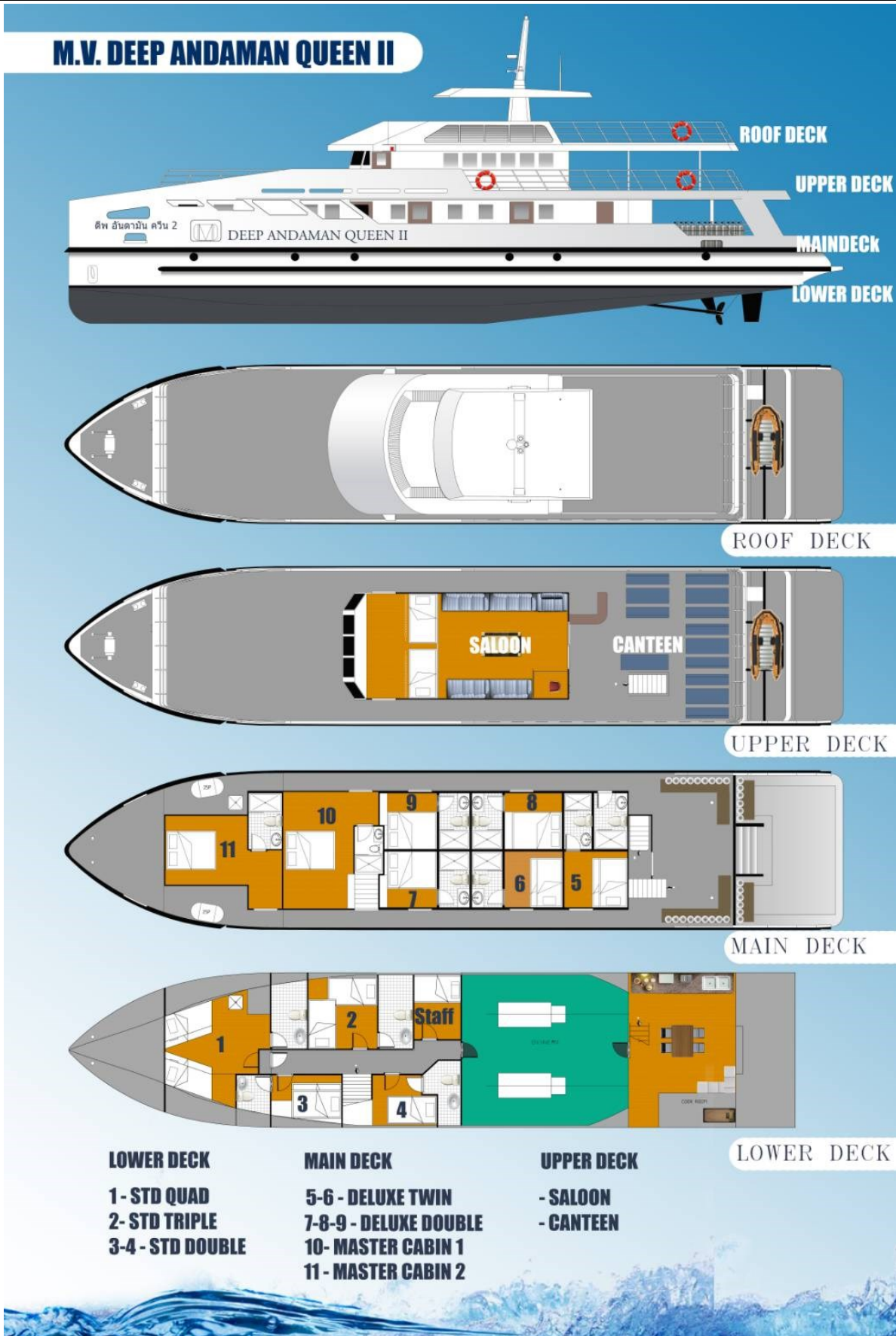
# MV Deep Andaman Queen

1-25 person









## Boat Specifications

1-25 person

- Year built 2008
- Year renovated 2019
- Length 30.5 m
- Beam 7 m
- Top speed 12 knots
- Cruising Speed 9.5 knots
- Engines 2 x 420 HP
- Max guests 25
- Number of cabins 11
- Number of bathrooms 12
- Water capacity 20,000 liters
- Fuel capacity 15,000 liters
- 

### Cabins

- All cabins complete with 220 volt of Electricity 24 hours a day
- Air-conditioning system
- Water capacity 20000 liters
- Fuel capacity 15000 liters
- Guest capacity 25 pax
- 2 Master cabins
- 5 Deluxe cabins
- 1 Standard Quad cabin
- 1 Standard Triple cabin
- 2 Standard Twin cabins